

## SHAWNEE HOUSE

COTTAGE AND FARM

On Delaware River

W. T. TRANSUE

Located within one minute's walk from the river, on the famous river drive. No better bass fishing along the Delaware.

Bathing, Boating, Tennis, Etc.

Vegetables, butter, eggs, milk, from own farm.

Livery and Garage Attached

Write for booklet and further information.

Shawnee-on-Delaware, Penna.

## The ANATOK

Three Miles Above the Famous Delaware Water Gap

The Anatok is delightfully located on a knoll of the Blue Mountains, commanding magnificent views of the famous Delaware River, Delaware Water Gap and the Blue Mountains. The features are: comfortable rooms, spacious veranda, well shaded lawn, good table, boating, bathing and bass fishing. Close by is the magnificent 18 hole golf course of the Shawnee Country Club, where guests can secure golf privileges, by proper introduction and upon payment of the club's regular charges.

Information cheerfully furnished.

ELWOOD B. EDWARDS, Proprietor  
Shawnee-on-Delaware,  
Monroe County, Pa.



## LENWOOD HOUSE

Beautifully located on elevated and dry ground.

At the Pleasant Village of Shawnee-on-Delaware

Near the Delaware River

Three miles above, but in full view of the Blue Mountains for many miles; surrounded by beautiful scenery on every side.

GEORGE DETRICH & SON,  
Proprietors

Shawnee-on-Delaware, Pa.





## Monomonock Inn

Cresco Station, D. L. & W. R. R.  
MOUNTAINHOME, PA.

Entirely new.

Modern appointments.

Unsurpassed, unobstructed panoramic views.

Rooms en suite, with private bath.

Running water in rooms.

Tennis. Shuffleboards. Billiards

For further information, apply to

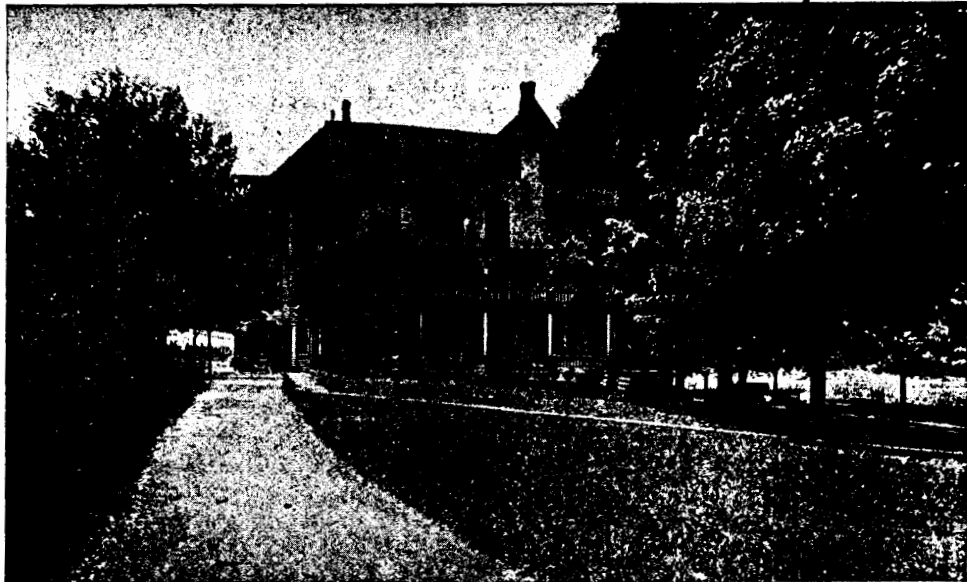
H. E. and J. M. GEISSINGER

## Henryville House

HENRYVILLE, PA.

A pleasant Mountain Resort in the Pocono Mountains. High, healthy and cool. Beautiful scenery, shady walks and drives. Home comforts. Elevation 1,100 feet above tide water.

EUGENE HENRY,  
Owner and Proprietor



## Stites Mountain House

ANALOMINK, PA.

Located on the beautiful Analomink stream, between the Blue Ridge and the Pocono Mountains. Accommodations for 100 guests. Invigorating air, pure water and a bountiful table. Special attention given to auto parties. Send for illustrated booklet.

THOMAS H. STITES,  
Analomink, Pa.



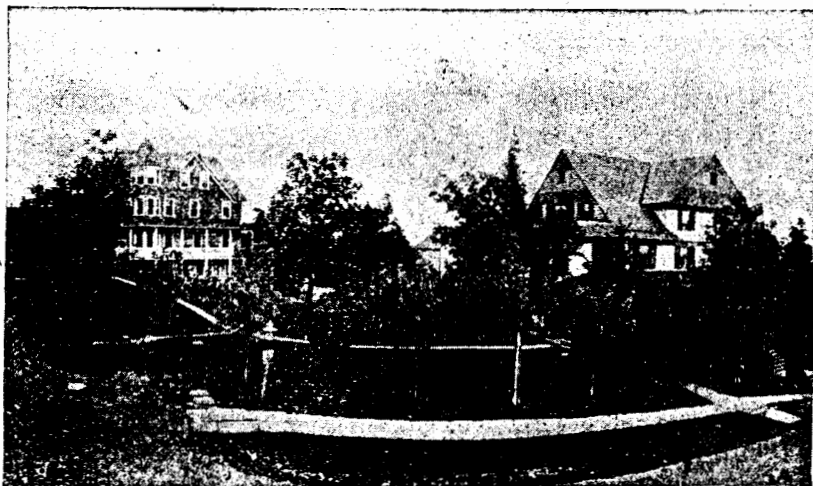
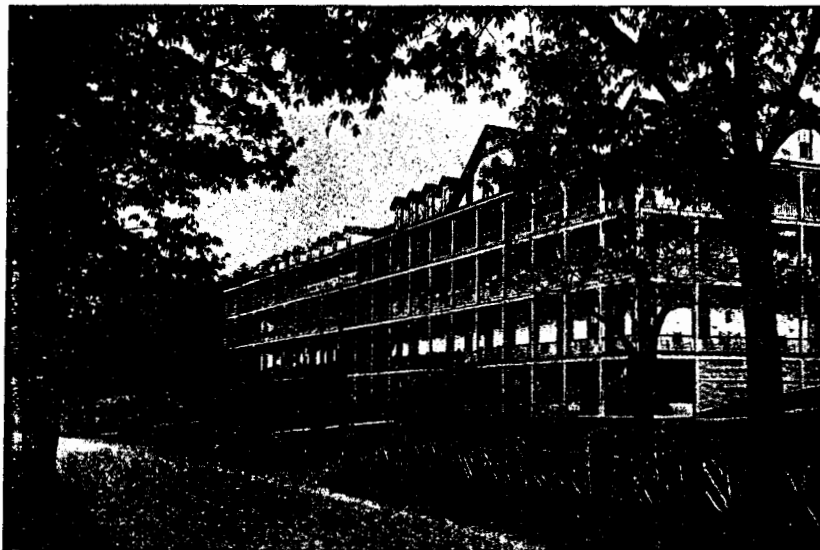
# Pocono Mountain House and Springs

Elevation 1,824 feet. Cool, bracing atmosphere; sixty-mile view from hotel veranda. Accommodates 250. Cuisine and service equal to first-class city hotels. Free from malaria and mosquitoes. Golf privileges. Gas and Steam Heat.

Riding school of 15 horses. Three concerts daily. The fact that this house has been managed by the owners for the past twenty-eight years should be a recommendation in itself. Catholic, Episcopal, Methodist, Presbyterian Churches near.

Three Tennis Courts. Booklet

E. D. HOOKER, Prop., MOUNT POCONO, PA.



# FAIRVIEW HOUSE and Annex

G. M. SHOEMAKER, Proprietor,

Newly Remodeled

MOUNT POCONO, PENNA.

Modern throughout; gas, electric light. Steam heat. The water used is from the famous Wilson Spring.

Roof Garden—Dancing Evenings.

BOWLING. TENNIS. POOL. CAFE  
OPEN ALL THE YEAR.

# Pocono Hotel

C. E. TRACH, Proprietor,  
Tannersville, Pa.

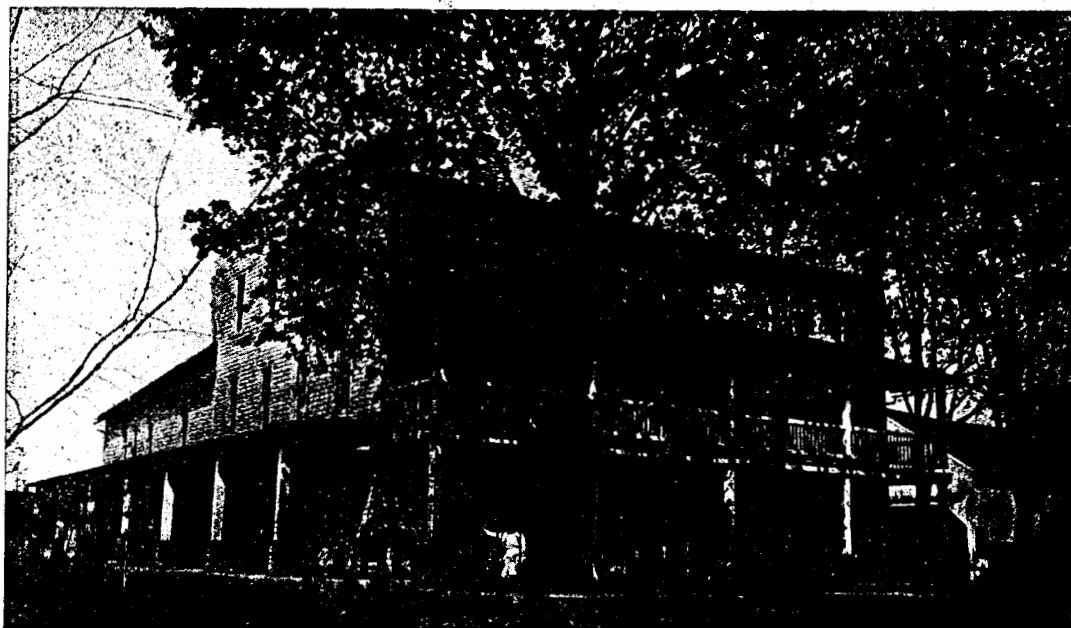
Newly remodeled and re-furnished. Baths, hot and cold running water, etc. Good table. Special attention given to auto, fishing and hunting parties. Dogs and guides furnished. Spacious verandas. Old shade. A well stocked bar.

Sunday chicken and waffle dinners during the season.

**RATES:**

\$2.00 Per Day. \$8.00 Per Week and Up.

BOTH TELEPHONES





## TURN VILLA

Beautifully situated on main road from Stroudsburg to Milford. Shady lawns, large and cool porches. Electric lights, hot and cold water and bath in main house. Electric lights and toilets in bungalows and cottages. Table supplied with products from our own farm. Boating and bathing 1,050 yards from the house, on the famous Echo Lake. Within a few miles of the well-known waterfalls of Monroe and Pike Counties. Private Railroad Station 315 yards from the house. Four Bungalows, Hall, etc. For further particulars, address

M. D. TURN, East Stroudsburg, No. 2, Monroe County, Pa.

Railroad Station, Turn Villa.

## Cataract House

DELAWARE WATER GAP, PA.

The most popular resort for young people at Delaware Water Gap.

**Cuisine Unexcelled**

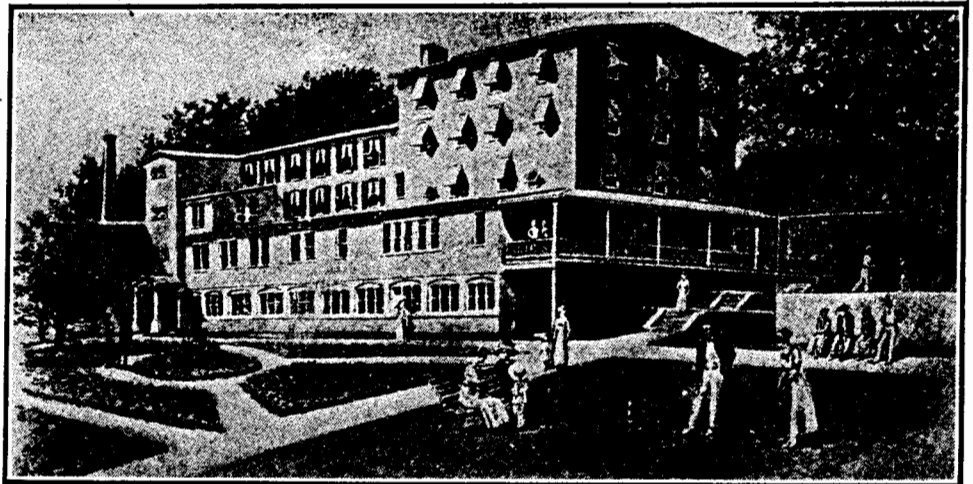
Pure Artesian Water. Spacious verandas, old shade. Canoeing on the Delaware. Ball games by college students.

**Hot and Cold Baths**

Hardwood floors. Comfortable beds. Excellent boating and fishing. Booklet on application.

**Livery and Garage**

G. R. TUCKER



## The Willow Dell

AN EDEN

Splendid in its equipment, unrivaled in its location, admirable in its management. On the bonny banks of Silver Lake, at the beautiful Buttermilk Falls, about a mile and a half from the Delaware Water Gap station in an environment of surpassing beauty.

**A GARDEN SPOT**

Table supplied with home garden. Every possible modern convenience and comfort; most excellent bed rooms. Broad piazzas. Gas light. Furnace in Spring and Fall. Baths on every floor.

SEGUINE & ALTEMOSE, Proprietors,  
NORTH WATER GAP, PA.